

State Capitol Display on the Contributions of Women to Nevada



Prepared for the Nevada Commission for Women – December 14, 2017

By

stories in place

storiesinplace.com | 775.771.3975 | alicia@storiesinplace.com

CONTENTS

| | |
|--|----|
| Guiding principles for the NCFW and objectives for the exhibit | 1 |
| Site photos | 2 |
| Floor plan and general dimensions..... | 3 |
| Display approach | 4 |
| Available Funds | 6 |
| Cost Breakdown | 7 |
| Additional elements to consider..... | 8 |
| Suggested content overview for proposed historical panels | 9 |
| Next steps | 14 |

GUIDING PRINCIPLES FOR THE NCFW

The Nevada Commission for Women studies the changing and developing roles and contributions of women in the state.

The Commission is charged with the duty to study the changing and developing roles of women in society, including the recognition of socioeconomic factors that influence the status of women, and recommend proposed legislation.

OBJECTIVES FOR THE EXHIBIT

1. To engage the public in the development of the exhibit based on the themes identified by the Commission; and
2. To ensure that visitors to the state capitol are invited to reflect on women's contributions to Nevada's heritage, traditions, and history and to understand the relevance of those contributions to current conditions in our state.

SITE PHOTOS

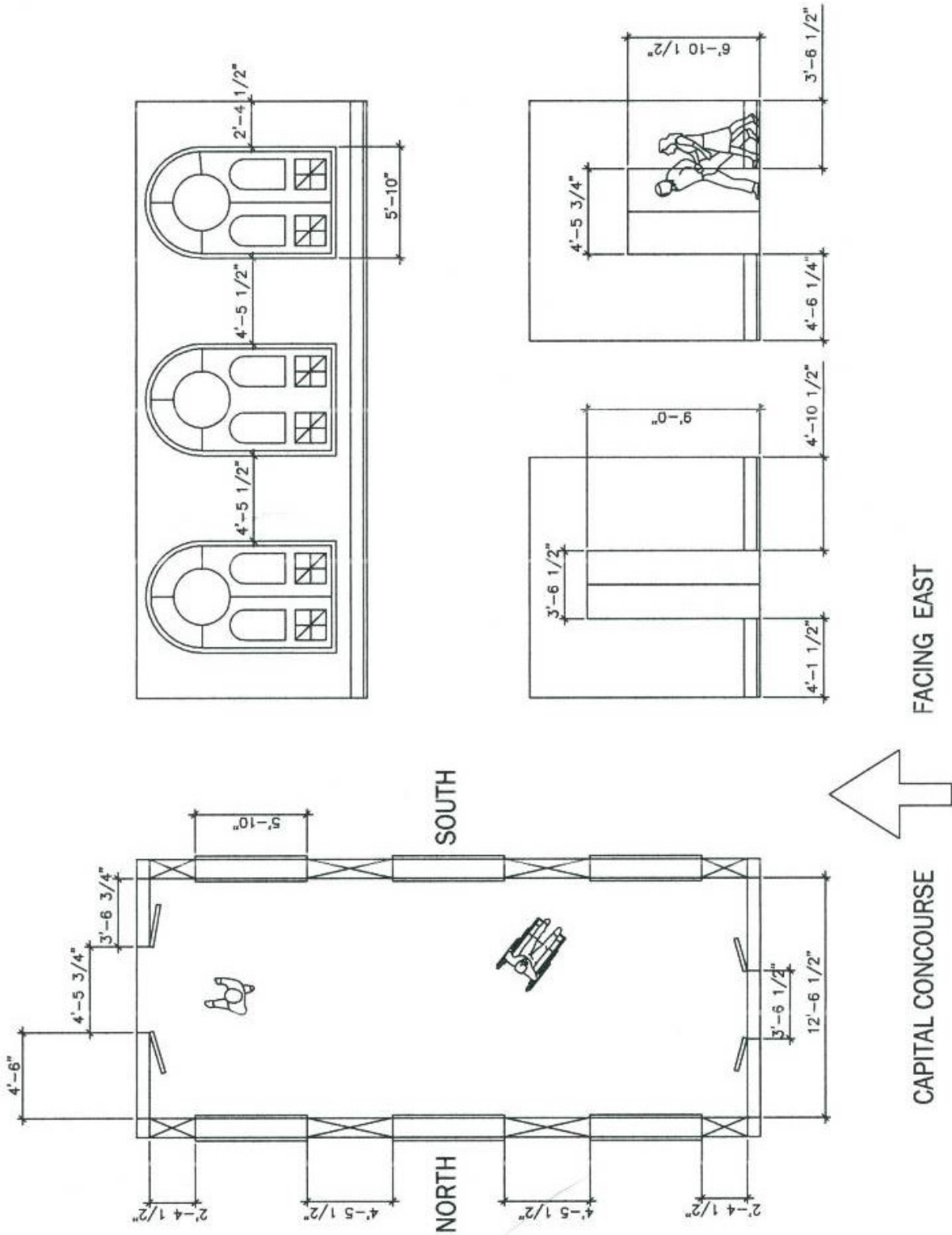


Breezeway – north wall

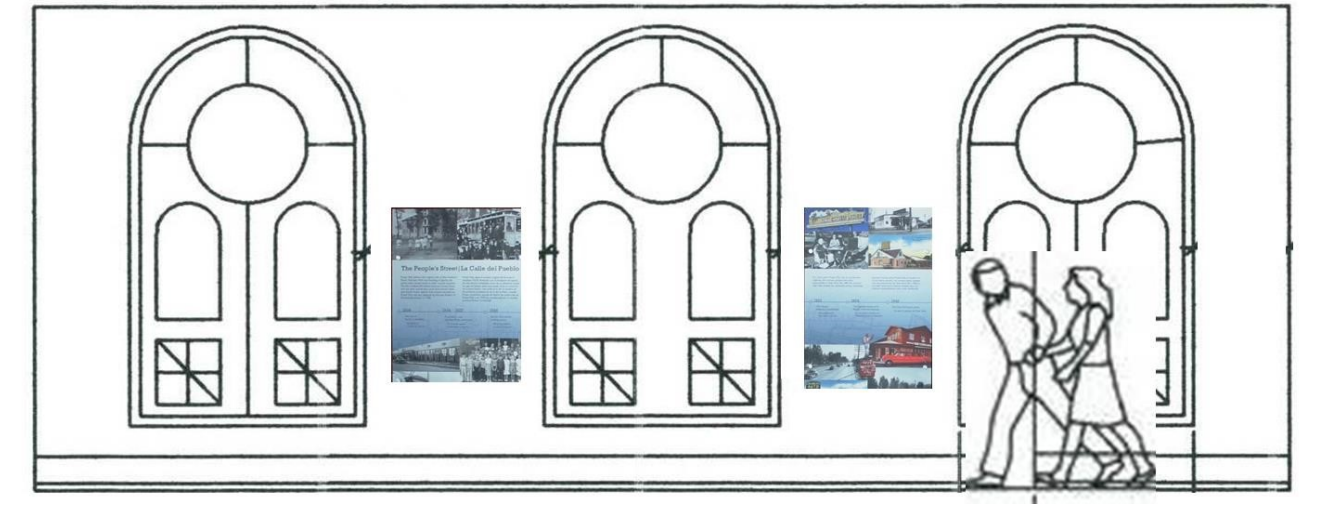


Breezeway – looking east toward Guinn Room

FLOOR PLAN AND GENERAL DIMENSIONS



DISPLAY APPROACH



INTERPRETIVE PANELS

Designed panels combining text and images are a cost-effective way to deliver information and provide visual interest when describing issues relating to Nevada's women.



Panels with the dimensions of 36" W x 48" H can fit between the windows and on either side of the doorways leading into and out of the breezeway (with the exception of one, which would be narrower).

Mounted anywhere from 30" to 36" from the floor, this size provides a good amount of usable space for readable text and a fair number of scanned images (photos, documents, etc.). As shown in this example (left), designed interpretive panels can combine historical and contemporary images with colorful graphics and headers and varying amounts of text to create a visually engaging and informative display.

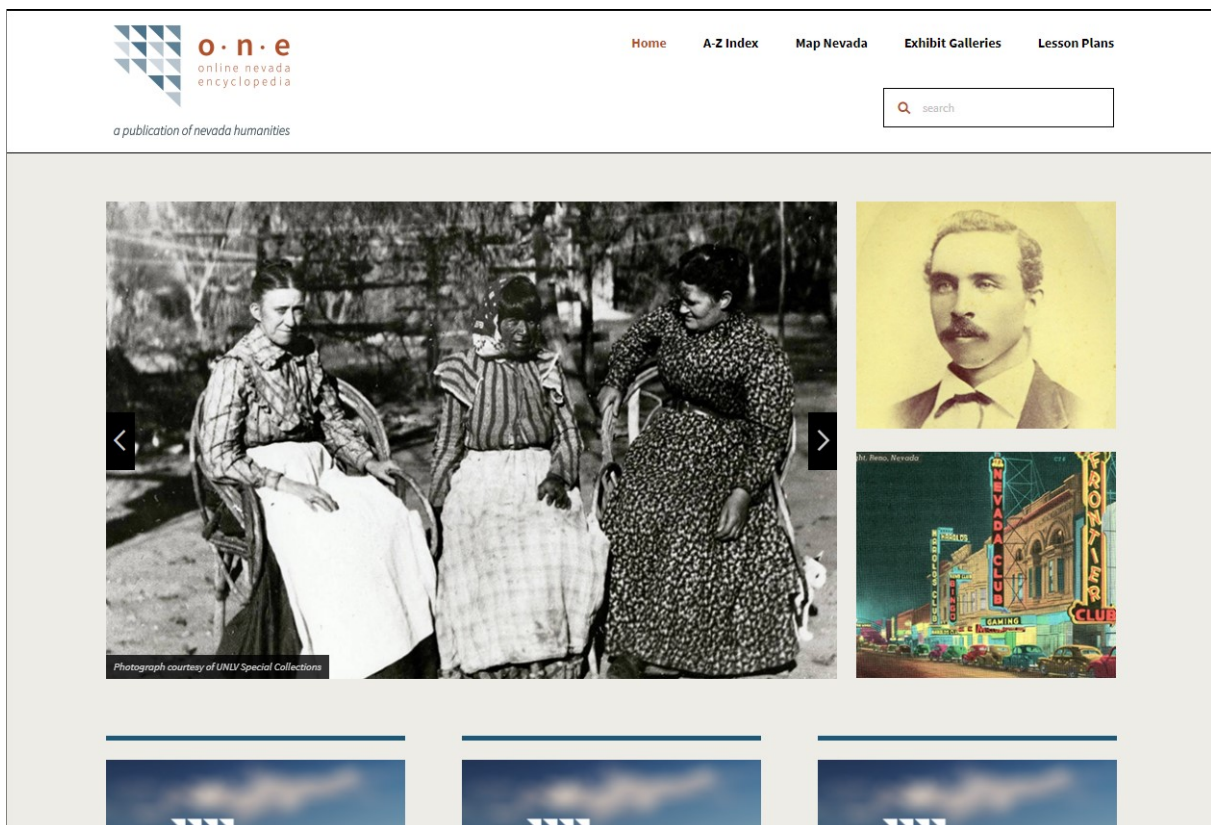
The panels could later be augmented by display cases and/or additional graphic or digital elements. They are also not expensive to replace.

The NCFW can also use the DISPLAY CASE currently standing in the outside hallway to display books or borrowed artifacts and other objects.

ONLINE FEATURE

A permanent digital counterpart to the physical exhibit will reflect the exhibit's content as well as create a portal to the wide array of material about Nevada women already existing on the Nevada Humanities website Online Nevada (onlinenevada.org), also known as the ONE (Online Nevada Encyclopedia).

Some of the existing articles found on the Online Nevada site include entries about Alice Key, Barbara Vucanovich, Charlotte Hunter Arley, Claudine B. Williams, the Daughters of Charity, Emilie Wanderer, Felice Cohn, Flora Dungan, Hattie Canty, Helen Herr, Lily Fong, Lorraine Hunt, Lubertha Johnson, Maude Frazier, Sarah Winnemucca, Sarann Knight Preddy, Thalia Dondero, and many more.



Nevada Humanities has offered to provide \$2,000 to this project for the creation of lesson plans that will allow teachers to easily incorporate content from the online feature into their classes.

The website will be promoted in the physical exhibit in the State Capitol building, and the website will also refer to the physical exhibit, broadening awareness of both components.

AVAILABLE FUNDS

| | |
|--|---|
| Nevada Humanities grant | \$4,500 |
| Nevada Humanities funds for lesson plans | \$2,000 |
| NV150 Foundation grant | \$5,000 - \$10,000 (TBD by end of 2017) |
| Additional grant (anonymous) | \$2,500 |
| TOTAL | \$14,000 - \$19,000 |

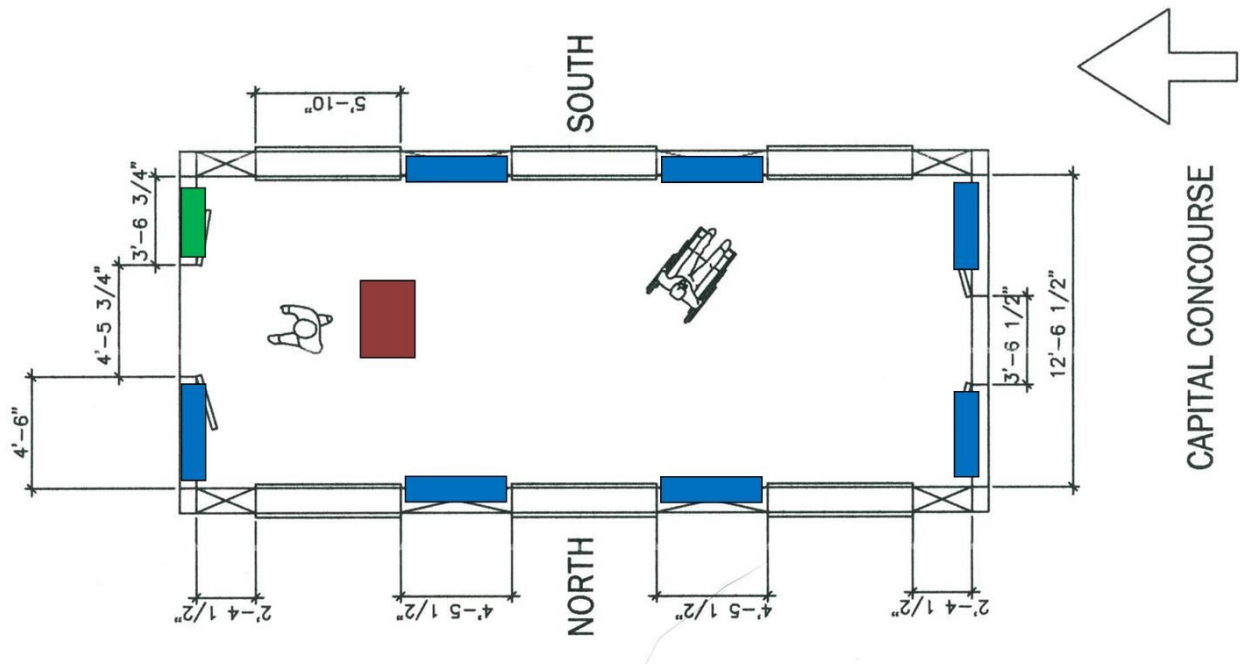


BASE LEVEL OPTION (approximately \$14,000)

Seven interpretive panels, each 36"W x 48"H (indicated in blue): four panels between the windows, two panels on the west wall, one panel on the east wall, and a life-size photograph (green) in the northeast corner to draw attention from down the hall. Display case (red) in the center of the room.

Panel Content

- Introduction to Women's Contributions to Nevada and the Nevada Commission for Women
- Representation by Women in Nevada Government (women's suffrage to elected officials)
- Political and Social Activism to improve the status of women and others
- Women at Work
- Women at the Capitol (from construction and staffing to First Ladies)
- Women on Boards and Commissions and/or statistics about women's accomplishments
- Panel dedicated to contemporary organizations working on women's issues or other topics.



Cost Estimate for Base-Level Option

| | | |
|---------------------------------------|--------------------------------|-------------------------|
| Graphic Design | \$280 per panel x 7 | \$1,960 |
| Fabrication (epanel) | \$231.80 per panel x 7 | \$1622.60 |
| Life-size photograph | Fabrication and mounting | \$250 |
| Research and Writing | \$50/hour x 10 hours/panel x 7 | \$3,500 |
| Image acquisition | \$10-\$25 per image | \$500-\$1000 |
| Materials for display case | Fees and materials | \$250 |
| OnlineNevada.org feature | \$50/hour x 30 hours | \$1500 |
| Project Management Workshop, Admin | \$50/hour x 56 hours | <u>\$2,800</u> |
| TOTAL | | \$12,382.60-\$12,882.60 |

ADDITIONAL ELEMENTS (If additional \$5,000 is received from NV150)

Once funding is secured, specific costs for each element can be determined.

- A system for collecting visitors' contact information. This could be something simple like a box with a slot for depositing information cards, and the Commission would just need to determine who monitors the box for writing utensils, collects the cards, etc.
- A heavy-duty flip-book with stories about additional women and activities could be affixed to a desk or platform in one of the corners for visitors to peruse at their leisure.
- Additional display cases, freestanding display panels, etc. Construction or purchase of new wooden cases could range from several hundred to one thousand dollars.
- Additional graphic elements (i.e. images installed above panels). These could incur minimal costs depending on what they are. Simpler graphic elements could also replace one or more of the interpreted panels, if desired.
- Any signage or additional display materials outside the door leading from the main Capitol hallway to the breezeway.

NOTE: The images featured on these pages are included as examples, not final selections.

INTRODUCTORY PANEL

- Information on the Nevada Commission for Women and what it does
- General overview of contributions of women to the state of Nevada
- Eye-catching images to attract visitors into the breezeway from the main hallway



Anne Martin traversing the state to promote women's suffrage. UNR Special Collections photo

DISPLAY CASE

- Books, literature, and other documents
- Potential objects and artifacts borrowed from the State of Nevada or other archival sources
- Possible additional text panel mounted to rear of display case with text, photos



REPRESENTATION BY WOMEN IN NEVADA GOVERNMENT

Activities and individuals oriented toward increasing the representation of women in lawmaking

- Women's suffrage (pursuit of the right to vote)
- Women serving as legislators
- Women elected to other state offices



Sadie Hurst (center), the first woman to be elected to the Nevada state legislature, watches as Governor Emmet D. Boyle signs the resolution ratifying the 19th amendment to the U.S. Constitution, February 7, 1920. U.S. Library of Congress photo.

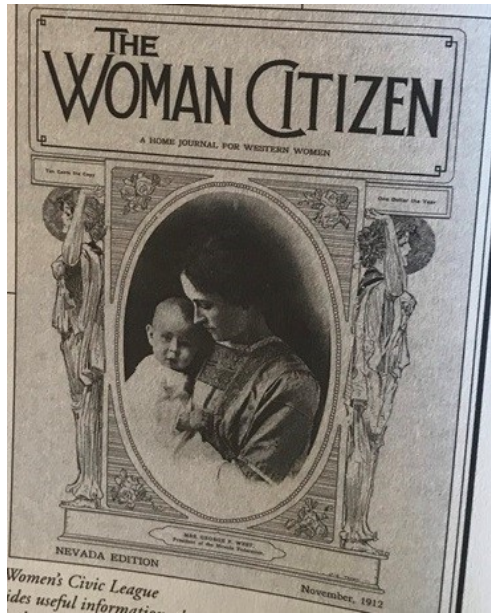


National Women's Conference 1977, Houston, Texas. Jean Ford led the Nevada delegation to the conference. UNR

POLITICAL AND SOCIAL ACTIVISM

Activism directed toward changing legislation to improve the lives and status of women and others.

- Club movement
- Temperance, Prohibition, Kindergarten movements
- Campaigns against lenient divorce and gambling laws
- Civil Rights and other contemporary issues



A 1912 publication geared emphasizing women's domestic role. Nevada Historical Society



Civil rights protesters at the Capitol, 1961. UNR Special Collections photo

WOMEN AT WORK

Demonstrating women's changing roles in society

- The wide range of work that women do and their changing roles in public life (there are countless examples to highlight; the Commission could suggest what they'd like to feature).
- The pursuit of equality, safety, justice, health care, family leave, etc. in the workplace



Myrtle Granger Pulsipher

Expanding cooking and housekeeping chores into the public realm were natural extensions of the domestic sphere, and an acceptable choice for women working outside the home. (Desert Valley Museum)

Chris Beck dealing

Chet (oprio)

Bill + Dorice Singleton

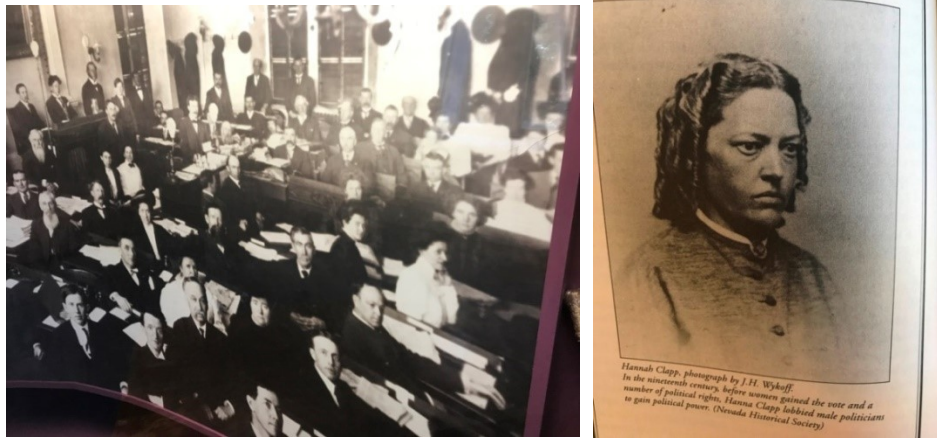


Mary (Harold)

Chris Beck dealing cards at Harolds Club, 1940s. Chris Beck photo.

WOMEN AT THE CAPITOL

Women's contributions in a variety of roles, from infrastructure to staffing to wives & First Ladies



Women on the legislative floor and Hannah Clapp, supplier of Capitol grounds fencing. Nevada Historical Society.



First Lady Kathleen Sandoval. State of Nevada photo.

NEXT STEPS FOR THE COMMISSION

1. Approve allocation of the existing display case in the Capitol to the breezeway exhibit.
2. Determine and write the message that the exhibit will include about the Commission, its findings, and/or activities.
3. Decide how to involve contemporary organizations and individuals and what to say and show about them.
4. Consider an event in the spring to kick off listening sessions and/or a later one to launch the exhibit.
5. Formulate other preferences and recommendations as desired.